

# Sunflower Historical Society



**Walter Helser '45**  
President  
150284 Warner St.  
Mitchell, NE 69357  
(308) 623-1304

## Board of Directors

**Jim Harrison '59**  
Vice President  
Box 144  
Mitchell, NE 69357  
(308) 623-3144

**Bonnie McNeese '49**  
Recording Secretary  
524 Madison  
Kimball, NE 69145  
(308) 235-2396

**Shirley Reinmuth '64**  
Treasurer  
215 W. 21st St.  
Scottsbluff, NE 69361  
(308) 632-5660

**Donna Talbott '51**  
Corresponding Secretary  
204 S. Oak  
Kimball, NE 69145  
(308) 235-4168  
donnaajt@megavision.com

**Emilie Darnall '57**  
Director  
6375 Hwy 88 East  
Harrisburg, NE 69345  
(308) 783-1456

**Jackie Gompert '48**  
Director  
1802 Ave. O  
Scottsbluff, NE 69361  
(308) 632-3430

**Dorothy Pedersen '54**  
Director  
3105 18th Ave.  
Scottsbluff, NE 69361  
(308) 635-5150

**Jim Hanson '59**  
Director  
3609 Spruce Dr.  
Scottsbluff, NE 69361  
(308) 635-0200

**Lawrence Murphy '50**  
Legal Counsel  
P.O. Box 5514  
Lincoln, NE 68505  
(402) 488-7866

## Office of Guidance and Counseling Scholarship Information and Applications Sunflower Historical Society

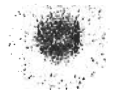
Please post and Duplicate any and all forms as needed to fill the students request for the following scholarships inclosed.

## THE SUNFLOWER HISTORICAL SOCIETY SCHOLARSHIP

## THE JAN HANSON ACADEMIC SCHOLARSHIP

P.S. Both scholarship are made possible by the efforts of the Sunflower Historical Society.

# Sunflower Historical Society



**Walter Helser '45**  
President  
150284 Warner St.  
Mitchell, NE 69357  
(308) 623-1304

## Board of Directors

**Jim Harrison '59**  
Vice President  
Box 144  
Mitchell, NE 69357  
(308) 623-3144

**Bonnie McNeas '49**  
Recording Secretary  
524 Madison  
Kimball, NE 69145  
(308) 235-2396

**Shirley Reinmuth '64**  
Treasurer  
215 W. 21st St.  
Scottsbluff, NE 69361  
(308) 632-5660

**Donna Talbott '51**  
Corresponding Secretary  
204 S. Oak  
Kimball, NE 69145  
(308) 235-4168  
donnajt@megavision.com

**Emilie Darnall '57**  
Director  
6375 Hwy 88 East  
Harrisburg, NE 69345  
(308) 783-1456

**Jackie Gompert '48**  
Director  
1802 Ave. O  
Scottsbluff, NE 69361  
(308) 632-3430

**Dorothy Pedersen '54**  
Director  
3105 18th Ave.  
Scottsbluff, NE 69361  
(308) 635-5150

**Jim Hanson '59**  
Director  
3609 Spruce Dr.  
Scottsbluff, NE 69361  
(308) 635-0200

**Lawrence Murphy '50**  
Legal Counsel  
P.O. Box 5514  
Lincoln, NE 68505  
(402) 488-7866

## Sunflower Scholarship Criteria for Applicants

1. Sunflower Scholarship is worth \$500.00 for (1) year. Applicants must have some relative who attended Sunflower School. The name of that person must be listed with the dates of their attendance.
2. Seniors, be they high School or Post-Graduate College planning further educational endeavors are encouraged to apply.
3. Application must be received by April 1<sup>st</sup>. Applications should be turned into Jim Hanson 3609 Spruce Drive Scottsbluff, Ne. 69361.
4. The selection committee shall be the Sunflower Historical Society Scholarship Committee.
5. Upon selection, recipient will receive official notification from the Scholarship Committee. The recipient is responsible for sending verification of full time student status, by sending class registration and schedule to Shirley Reinmuth-215 West 21<sup>st</sup>. Scottsbluff, NE 69361. The scholarship money will be sent TO the recipient. The recipient must send NOTIFICATION OF ACCEPTANCE TO SHIRLEY REINMUTH IMMEDIATELY.
6. Full time student status, shall be determined by the Institution of choice.
7. If for some unforeseen reason the applicant chosen can not full fill the obligations of the scholarship requirements, an alternate will be chosen.
8. All applications, notifications and reference papers must be typed.

# sunflower scholarship application

Name \_\_\_\_\_

Address \_\_\_\_\_ Phone \_\_\_\_\_

Parent or Guardian \_\_\_\_\_

Family members presently in college \_\_\_\_\_

Your Needs  
Assessment \_\_\_\_\_

Class rank at the end of first semester of senior year \_\_\_\_\_ GPA \_\_\_\_\_

Educational Institution you are planning to attend \_\_\_\_\_

What are your educational goals? \_\_\_\_\_

\_\_\_\_\_  
\_\_\_\_\_

List extra curricular school activities, organizations, and community activities including offices held. \_\_\_\_\_

\_\_\_\_\_  
\_\_\_\_\_

In your words give a short personal history profile: parents, siblings, hobbies, etc. Using no more than one-half type written page.

\_\_\_\_\_

Students signature

\_\_\_\_\_

Date